

**CERTIFIED LAND CORNER RECORDATION**

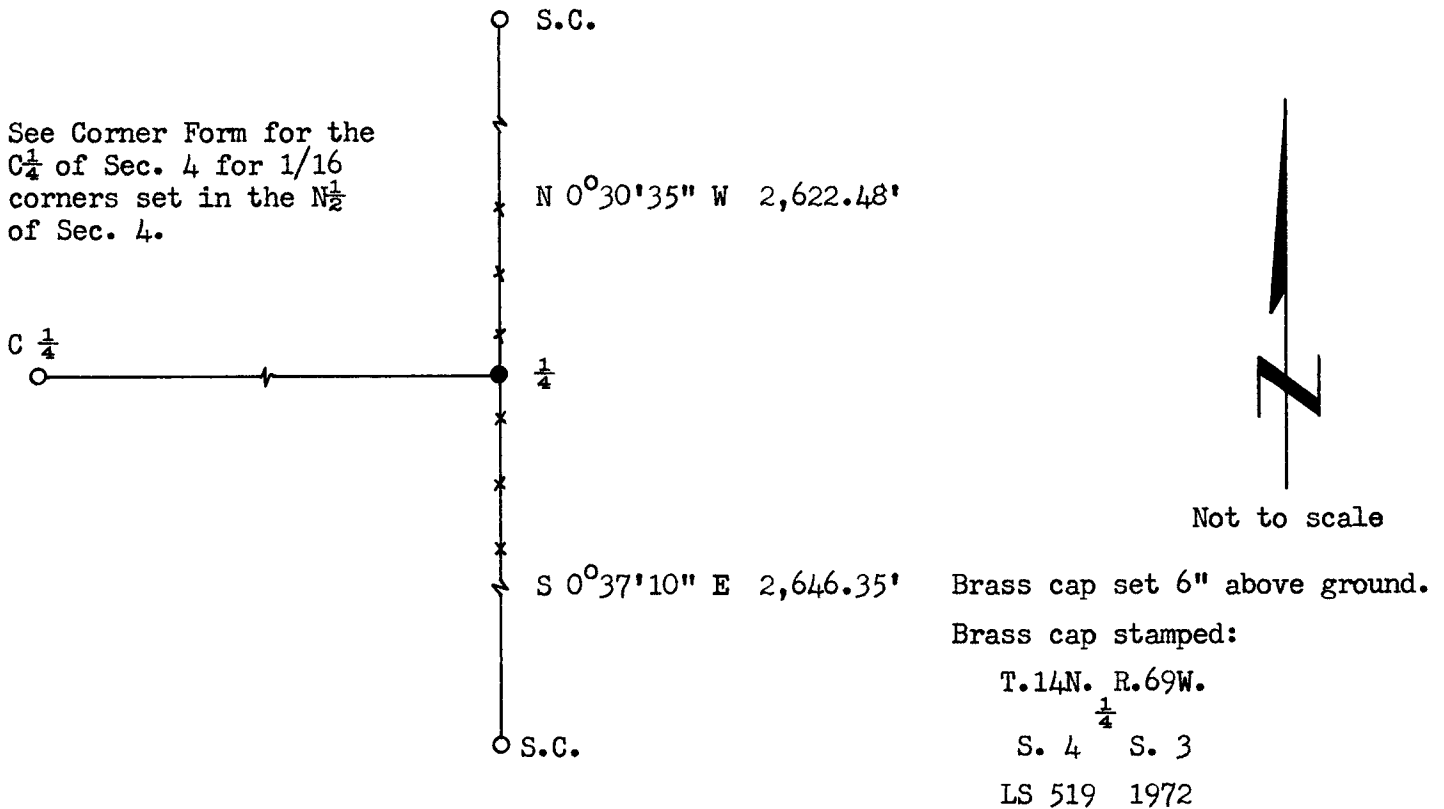
DESCRIPTION OF CORNER EVIDENCE FOUND, AND ORIGINAL RECORD (if known)

LOCATION Found 3" x 12" x 16" granite stone with "1/4", tipped.  
 1/4 G.L.O. record - Granite boulder, 16 x 10 x 4. Contract survey by Henry  
 S. 4 S. 3 G. Hay in 1870.  
 T.14N.,R.69W.  
 6th P.M.

DESCRIPTION OF MONUMENT AND ACCESSORIES ESTABLISHED  
 TO PERPETUATE THE ORIGINAL LOCATION OF THIS CORNER:

At the corner: Set a 1 1/2" dia. x 30" long iron pipe with brass cap.  
 Accessories: Left stone as memorial.

SKETCH, WITH COURSE AND DISTANCE TO ADJACENT CORNER IF DETERMINED IN THIS SURVEY.  
 (May Sketch or Paste Reproduction on Reverse Side.)



I, R.L. Hudson certify that I have carefully performed ~~or reviewed~~ the work done on the diagrammed corner as reported on this recordation form and approve the same.

R.L. Hudson Wyoming L.S. No. 519  
 Signature of Surveyor Registration No.

STATE OF WYOMING,  
 Office of Clerk and Recorder,  
 County of Laramie

This "corner record" was filed for record on the 30th day of October, 1972, was noted on the cross-index plat and is assigned page No. 14-69, in book No. ONE

John B. Hillman  
 County Official

Cross Index No. _____	T. _____	R. _____	Mer. _____
_____	T. _____	R. _____	Mer. _____
_____	T. _____	R. _____	Mer. _____
_____	T. _____	R. _____	Mer. _____
_____	T. _____	R. _____	Mer. _____
_____	T. _____	R. _____	Mer. _____
_____	T. _____	R. _____	Mer. _____

The State of Wyoming }  
County of Laramie } SS

This instrument was filed for record  
at 9:46 o'clock P.M. on the  
30th day of October  
A. D. 19 28 and duly recorded in  
Book ..... on page .....

*John B. [Signature]*

Notary Public & Ex-Officio Register of Deeds  
Deputy